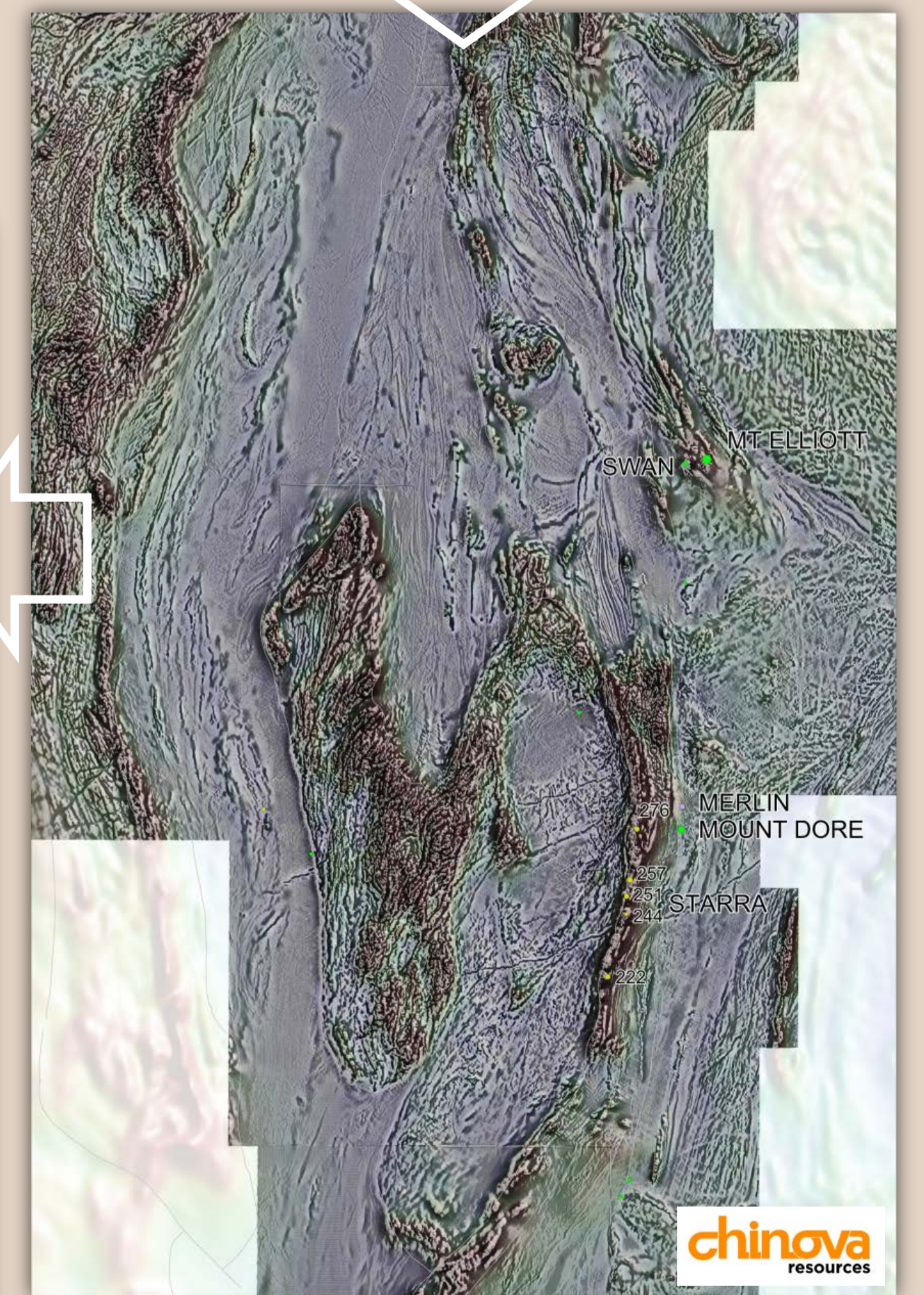
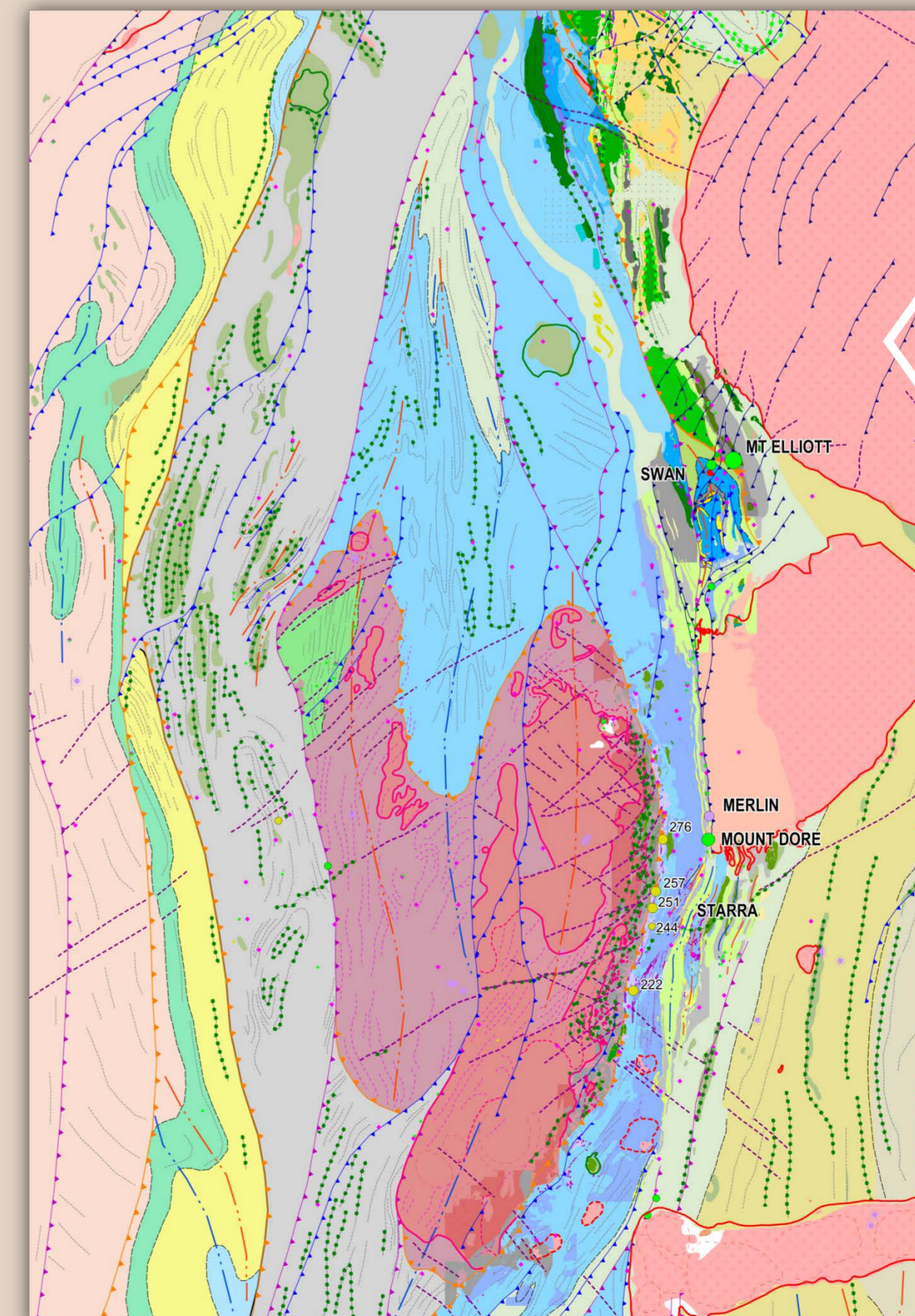
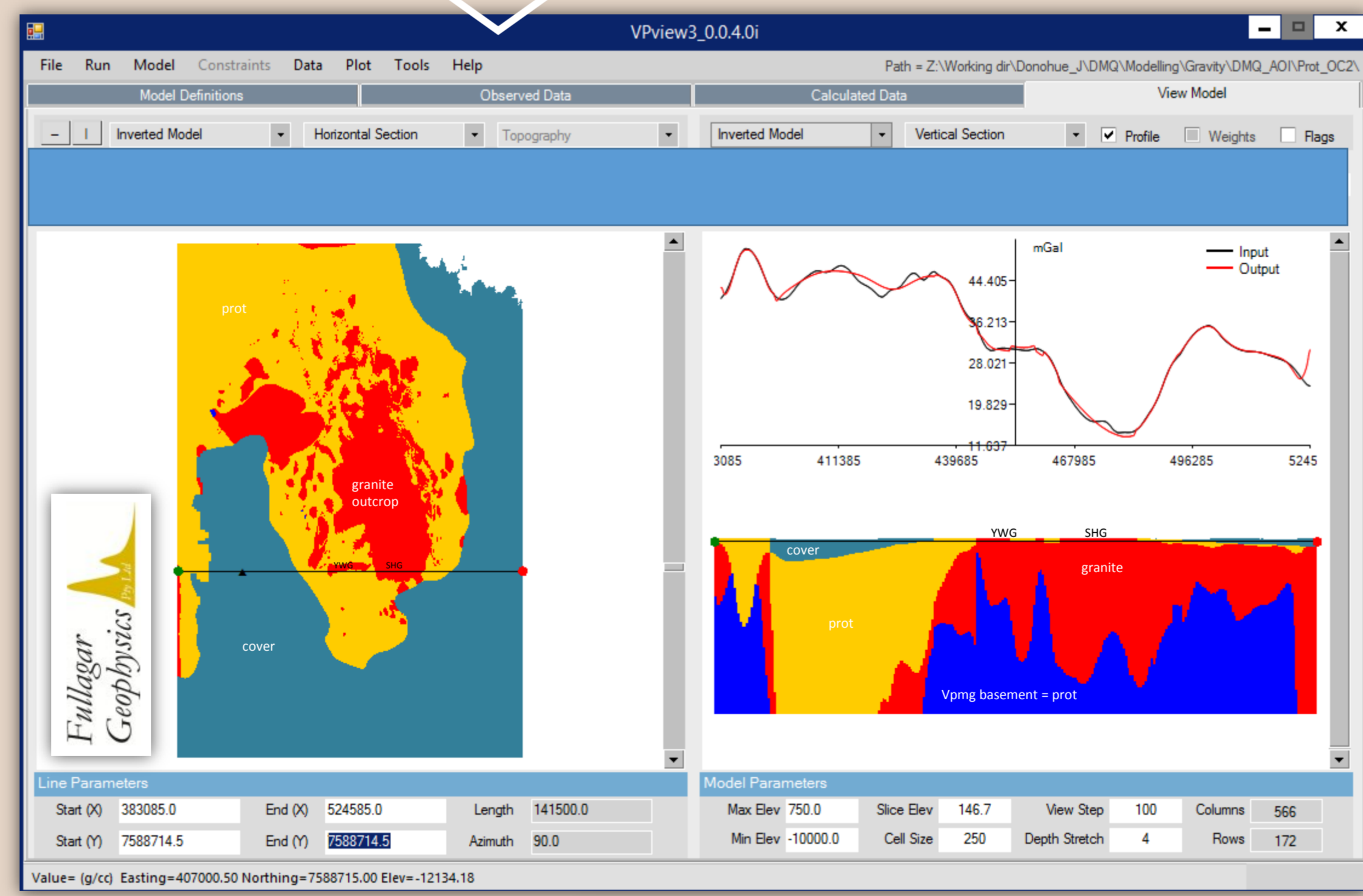
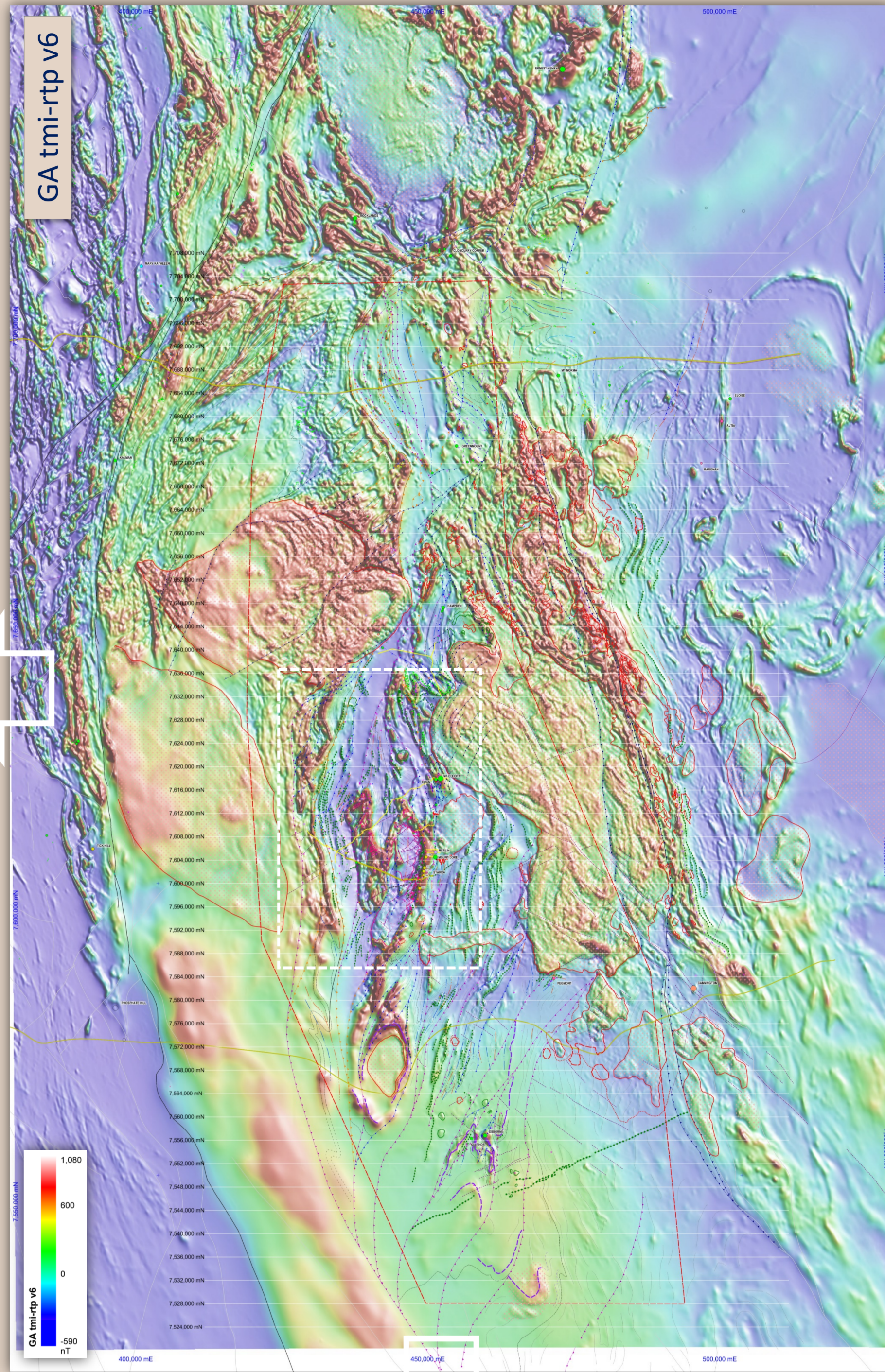
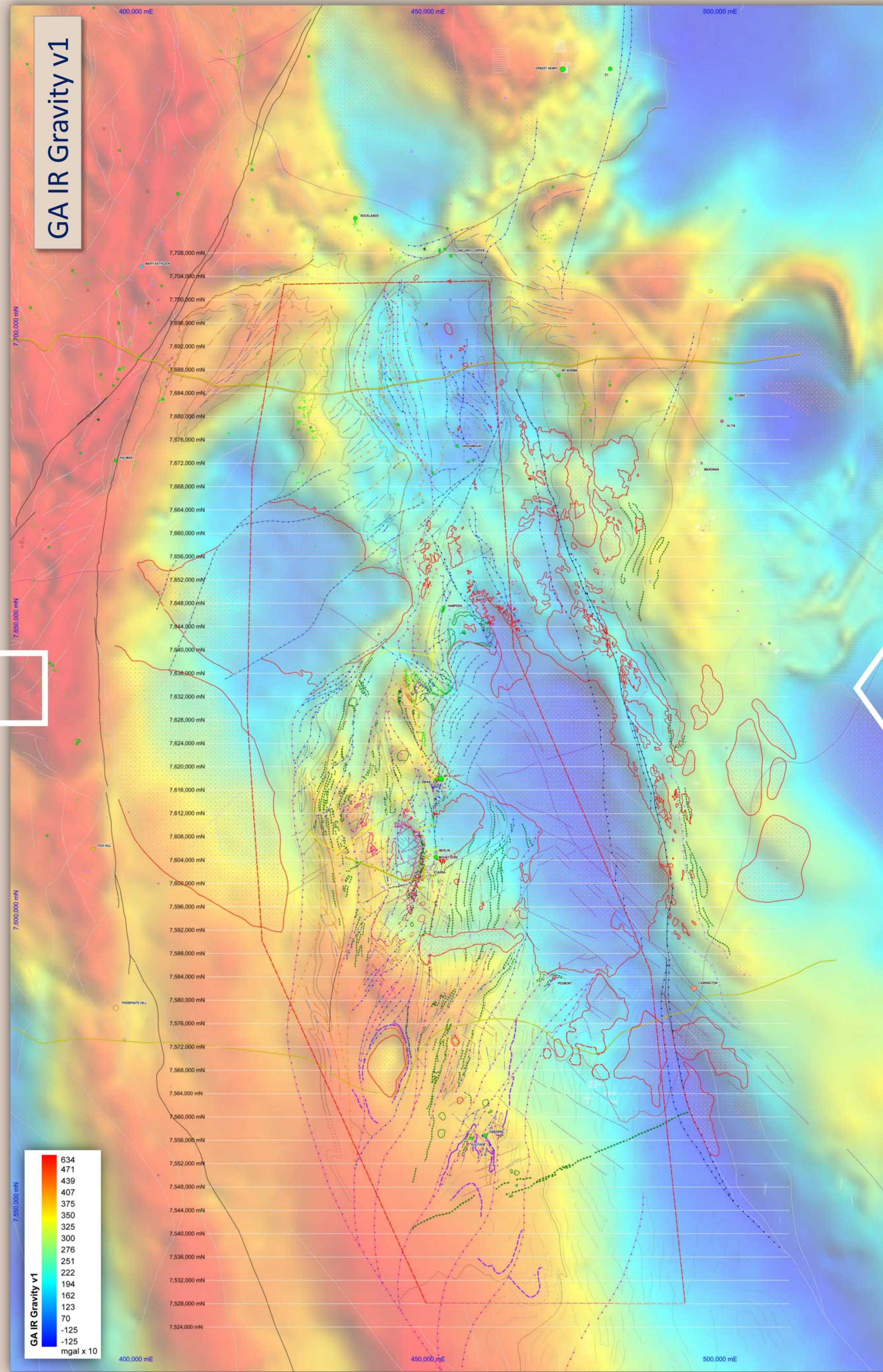
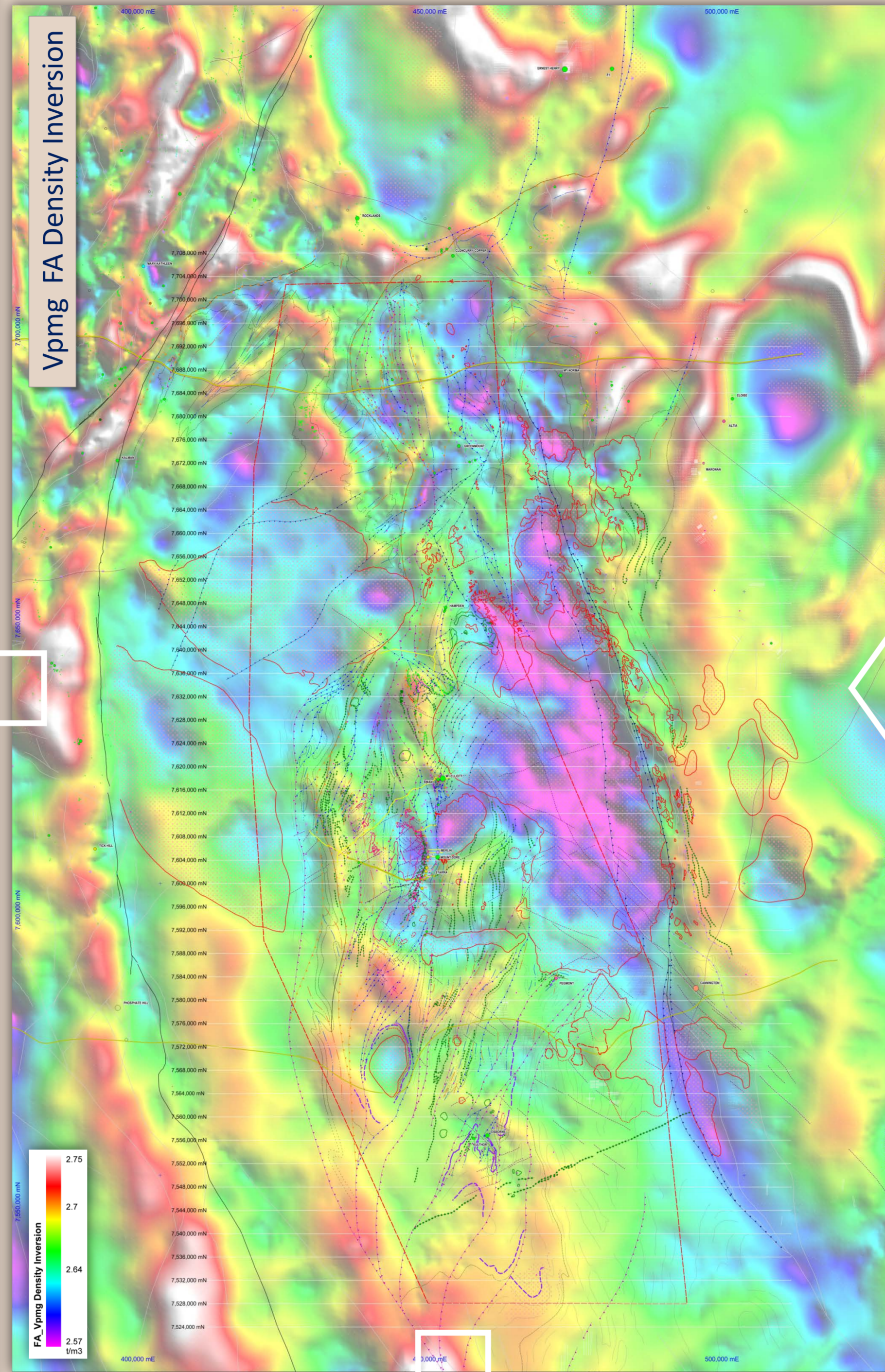
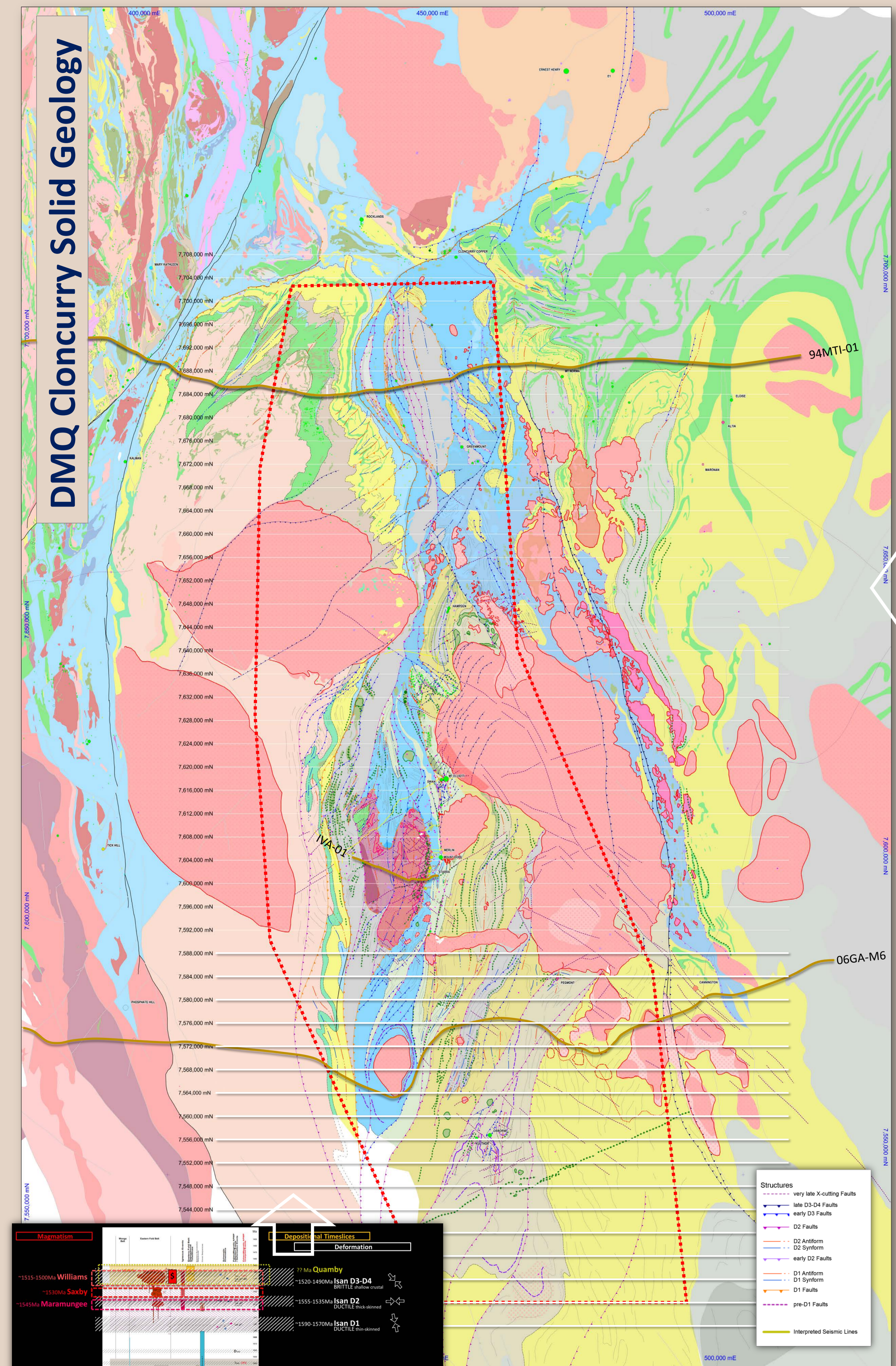


# DEEP MINING QUEENSLAND (DMQ)

## Southern Cloncurry 3D Prospectivity-1

### DMQ Cloncurry Solid Geology



Interpretation of regional and detailed magnetics, the regional gravity and Free-Air density inversions of the gravity data, combined with regional and detailed geological mapping have resulted in a re-built, time-sliced Solid Geological Map of the EFB. An updated 2000 NWQMP T-x Chart that reflects current understanding of EFB package relationships and latest geochronology has constrained the complex tectono-stratigraphic development of the belt.

Constrained and unconstrained density inversions of the gravity and magnetic data using the Fullagar Geophysics Vpvm software are being used to constrain WILLIAMS granite at depth whose geometries are believed to critically constrain IOCG fluid convection during Ison D3-D4 deformation. Significantly more WILLIAMS granite is believed to exist at depth than has been previously modelled in the region. This is made abundantly clear in the simplistic, FreeAir Density inversion of the regional gravity data presented above.

